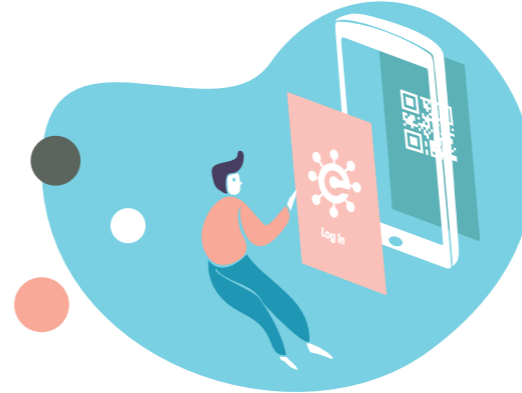


# E-COVIG 19 WORKFLOW

1 The health professional installs the e-CoVig app and assigns a unique identification code to the patient



2 The patient photographs the identification code to access



3 The patient takes periodic measurements with the e-CoVig app and/or device



4 The patient answers the questionnaire COVID symptomatology



5 The questionnaire data and measurements are sent to the BrainAnswer cloud



6 The doctor remotely observes patient outcomes and progress

